



gm9 colorProof₀₄

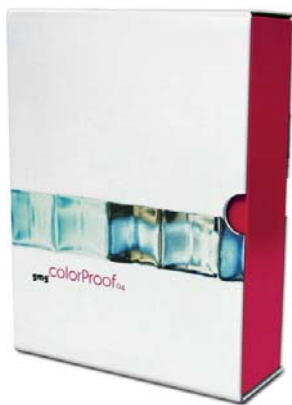
Excellent color accuracy
for contract proofs

GMG ColorProof₀₄

Now that many operations in prepress are no longer necessary thanks to the spread of digital technology, the ability to preview finished products using a digital proof is particularly important. This can immediately show up any possible errors in the printing process that could cause significant costs and unnecessary complaints later on. In a number of international tests on competing products, GMG ColorProof₀₄ has consistently achieved the top score. It guarantees excellent color accuracy for digital contract proofs.

Support for all standard data formats

GMG ColorProof₀₄ includes the following modules: GMG ColorEngine, GMG ProfileEditor with SpotColor-Editor, GMG RIPServer, as well as output modules for a wide range of output



GMG ColorProof₀₄ is the ideal high-end proofing solution whenever a color-accurate contract proof is required.

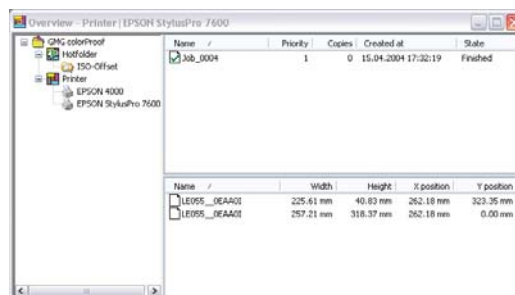
devices in a variety of format classes. GMG ColorProof₀₄ supports all standard spot color systems – including the PANTONE® Color Library supplied with the product – with up to 64 individual separations per image and is compatible with standard ICC profiles. These can be combined with GMG device link profiles.

With GMG ColorProof, users need only run a single printer calibration process, for example, when standard ISO profiles are used. This ensures that identical results can be achieved using different models within a particular family of printers.

Special options extend the services offered by GMG ColorProof in line with customer requirements

GMG ColorProof₀₄ has a modular design and can therefore be easily adapted to specific customer requirements. The GMG DotProof® option allows users to create screen proofs by ensuring that the final 1-bit TIFF data from the image-setter RIP is color-accurate – while retaining the original screen information.

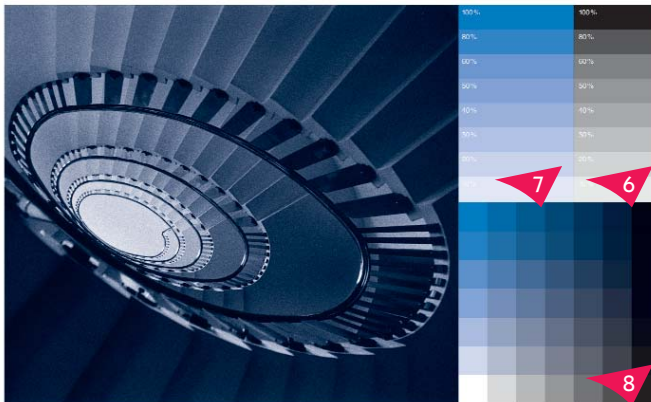
The GMG FileOut module allows a CMYK color space to be converted to another, while still maintaining the integrity of the black channel. Offset data, for example, can be converted automatically into gravure data.



The user has all the relevant functions available to him in a single screen.



- 1 Geometrical shapes, details visible (walls of the buildings, chairs)
 - Representation of saturated colors (sky)
- 2 Pure saturated colors clearly showing details
 - Natural representation of the colors of the fruit
 - Brown tones with modulation in the $3\frac{1}{4}$ tone
- 3 Sensitivity to the background in CMYK
 - Representation of light colors (yellow blouse, flowers)
- 4 Representation of light and shade, full dynamic range in 4C black and white
 - Stable colors and neutral representation
 - No saw-tooth effect on geometric shapes
- 5 Detailed, high-contrast 1C image
 - Reproduction of the black channel



Mixing of black process color with various special colors

- 6 Gradation and representation of pure black
- 7 Accurate reproduction of special colors with varied shading of surfaces
- 8 Accurate reproduction of special colors mixed with process colors

GMG ColorProof in practice

For years the renowned London-based prepress company Mullis Morgan Group plc has been convinced of the benefits of GMG ColorProof as a digital proofing solution. According to Robert Thurston, technical manager at Mullis Morgan, GMG ColorProof is the ideal solution for meeting his clients' expectations.

Highest color accuracy using 4D profiles

GMG ColorProof 04 and the associated "hot folders" are very easy to set up and require little training on the part of the operator. According to Robert Thurston, GMG ProfileEditor allows



According to Robert Thurston, technical manager at Mullis Morgan, GMG ColorProof is the ideal solution for meeting his clients' expectations.

color management specialists to make extremely precise manual corrections to the 4D profiles, which would not be possible using standard ICC tools. Robert attaches particular importance to the high levels of color accuracy that are achieved by using ColorProof. The tool's 4D color adaptation functions allow better treatment of the black channel than with exclusively ICC-based solutions, leading to more accurate color reproduction and quality.

For some situations and jobs, this can be a vital requirement. And fundamentally, of course, color accuracy and quality are the key factors for Mullis Morgan when selling proofs to their customers.

Reliable production, higher flexibility

At Mullis Morgan five Epson 7600 inkjet printers are used. The fact that the full spectrum of colors on the proof printer can be calibrated using a spectrophotometer ensures that identical output is achieved on all Epson systems. He also appreciates the flexibility of GMG



The London-based prepress company Mullis Morgan Group has been relying on GMG ColorProof for years now. Its managers believe that GMG's solution provides the very best means of fulfilling the extremely high demands made of a color-accurate contract proof.

ColorProof. "We now have the ability to build our own output matches on any media substrate, helping to improve the final result for the customer", says Robert. In Robert Thurston's view, another major advantage lies in the fact that he can rely on expert support from GMG's team whenever he needs it.



Trademarks

© 2004 GMG GmbH & Co. KG. GMG, the GMG logo and specified product names are registered trademarks or trademarks of GMG GmbH & Co. KG. PANTONE and other Pantone, Inc. trademarks are the property of Pantone, Inc. All other names and products are registered trademarks or trademarks of the respective company. Subject to technical and other modifications.

GMG GmbH & Co. KG
Moempelgarder Weg 10
72072 Tuebingen
Germany

Tel: +49 (0) 70 71/9 38 74-0
Fax: +49 (0) 70 71/9 38 74-22
info@gmgcolor.com
www.gmgcolor.com

Dealer's stamp